

Atalaya Golf & Country Club

5 Bedroom Villa

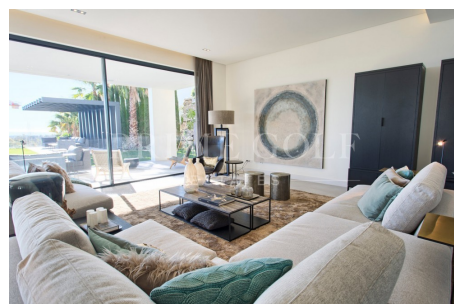
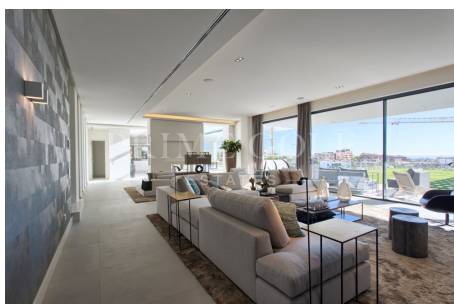
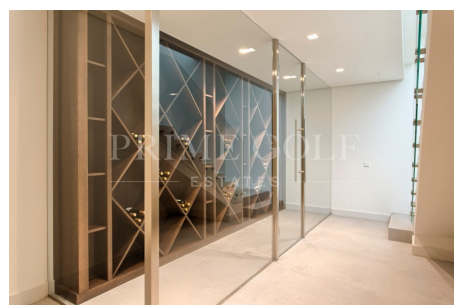
Spain, El Paraíso

€3.450.000

Ref: 2352MLV

Contemporary five bedroom, south facing quality villa designed by Carlos Lamas in the golf valley of La Alqueria, Benahavis, with panoramic sea, golf and mountains views. Only a short drive to the beach and all leisure amenities. The main floor has; a spacious open plan living and dining area with high ceilings and a large fireplace; fully fitted kitchen; guest bathroom and wardrobe. From the living area you have French doors leading out to the covered and uncovered terraces, an infinity pool, a landscape garden and chill out area with BBQ. On the first floor there is the master suite and three guest suites, all with direct access to terraces. The lower level has another guest suite, a wine cellar and a games or cinema room. Other features include under-floor heating, hot and cold air cond...

Gallery



Property Description

Location: Spain, El Paraíso

Contemporary five bedroom, south facing quality villa designed by Carlos Lamas in the golf valley of La Alqueria, Benahavis, with panoramic sea, golf and mountains views. Only a short drive to the beach and all leisure amenities. The main floor has; a spacious open plan living and dining area with high ceilings and a large fireplace; fully fitted kitchen; guest bathroom and wardrobe. From the living area you have French doors leading out to the covered and uncovered terraces, an infinity pool, a landscape garden and chill out area with BBQ. On the first floor there is the master suite and three guest suites, all with direct access to terraces. The lower level has another guest suite, a wine cellar and a games or cinema room. Other features include under-floor heating, hot and cold air conditioning, solar powered energy system, domotic system with lighting control, sound system by Sonos and a carport for three cars.

Additional Info

For Sale	Beds: 5	Baths: 5
Type: Villa	Living Area: 538sq m	Plot Size: 1614sq m
Parking spaces: 3	Infinity pool	Barbecue
Wine cellar	Basement	Option for Game or Cinema room
Solar panels	Brand new	Terrace: 111 m2

Features

Sea views	Golf views	Gated complex
Modern style	Walking distance to amenities	Swimming pool