

Rio de Janeiro Olympic

5 Bedroom Apartment

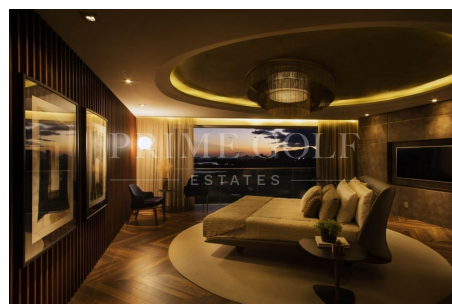
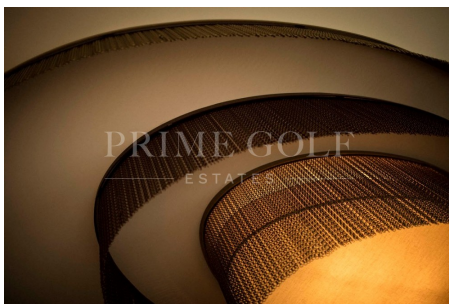
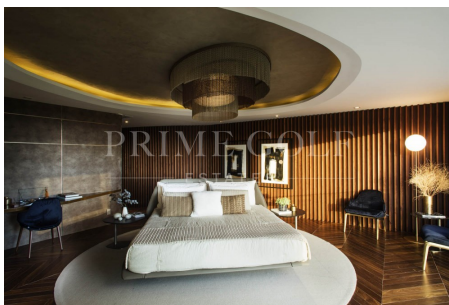
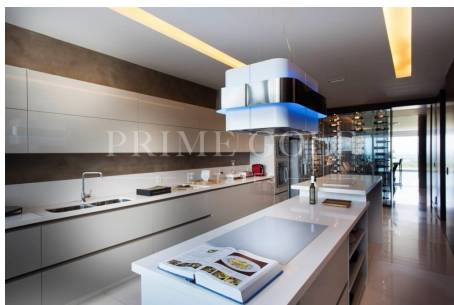
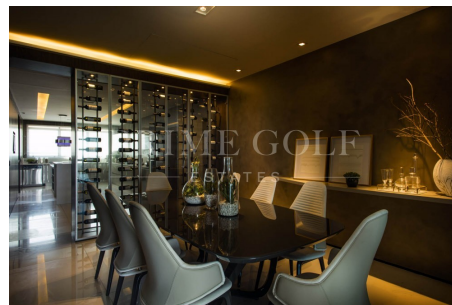
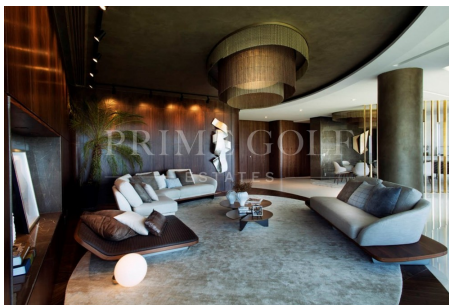
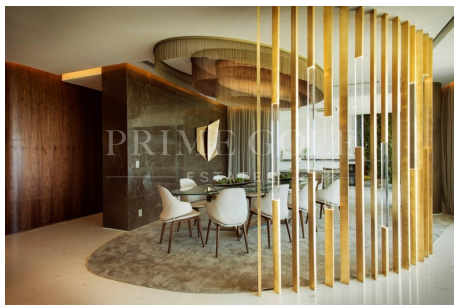
Brazil, Rio De Janeiro

€1.909.876

Ref: PG-1922

Riserva Golf is one of the most luxury residential gated condominium in Brazil, located in front of the legendary Rio 2016 Olympic Golf Course in Rio de Janeiro. The first residential project in Brazil with pre-certification by Leadership in Energy and Environmental Design, the ecological seal of approval with the widest international recognition. The project consists of more than 31,000 m² of land, with extensive leisure areas merged into gorgeous landscaping with native species and an architectural design that can bring nature right into the owners' homes. The condominium offers a full service with a wide range of facilities. The 4 towers consists out of fantastic apartments and penthouses with a total of 160 units. They are all facing the south and have spectacular views over the golf co...

Gallery



Property Description

Location: Brazil, Rio De Janeiro

Riserva Golf is one of the most luxury residential gated condominium in Brazil, located in front of the legendary Rio 2016 Olympic Golf Course in Rio de Janeiro.

The first residential project in Brazil with pre-certification by Leadership in Energy and Environmental Design, the ecological seal of approval with the widest international recognition. The project consists of more than 31,000 m² of land, with extensive leisure areas merged into gorgeous landscaping with native species and an architectural design that can bring nature right into the owners' homes.

The condominium offers a full service with a wide range of facilities.

The 4 towers consists out of fantastic apartments and penthouses with a total of 160 units. They are all facing the south and have spectacular views over the golf course, The Marapendi Natural Reserve and the sea.

Tower - Natura:

- 4 Suite Apartments: 266 m²

Price range in BRL: R\$ 4.473.397 - R\$ 5.927.250 (depening on floor level)

Just a few units left

- 5 Suite Penthouse: 555 m²

SOLD

Tower - Laguna:

- 4 Suite Apartments: 266 m²

SOLD OUT

- 5 Suite Penthouse: 555 m²

SOLD

Tower - Golf:

- 4 Suite Apartments: 381 m²

Price range in BRL: R\$ 6.203.634 - R\$ 8.463.123 (depening on floor level)

Just a few units left

- 5 Suite Penthouse: 761 m2

SOLD

Tower - Mare:

- 5 Suite Apartments: 648 m2

Price range in BRL: R\$ 10.865.857 - R\$ 14.364.864 (depening on floor level)

Just a few units left

- 6 Suite Penthouse: 1308 m2

SOLD

Additional Info

For Sale	Beds: 5	Baths: 5
Type: Apartment	Living Area: 648m2	Plot Size: 648m2
4 parking spaces		

Features

Sea views	Frontline golf	
Golf views	Gated complex	Modern style
Walking distance to the beach	Walking distance to amenities	Swimming pool