



**Pine Cliffs Resort**

## **2 Bedroom Apartment**

**Portugal, Albufeira**

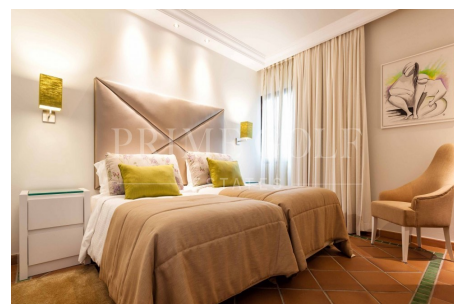
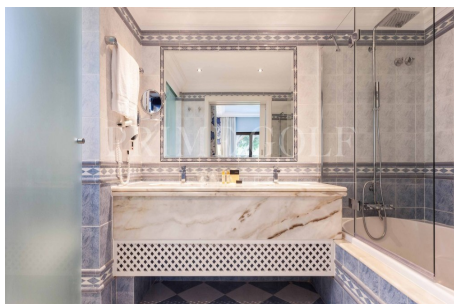
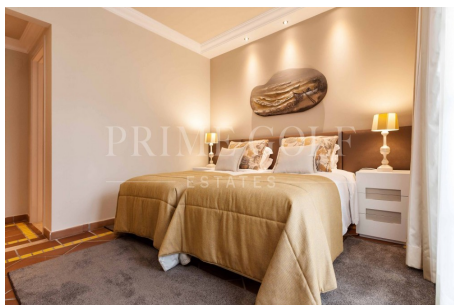
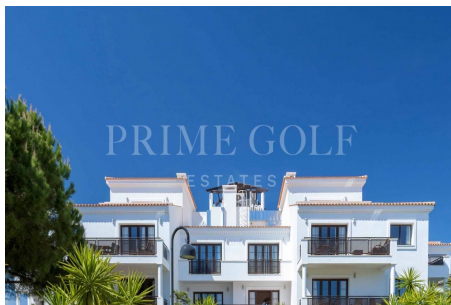
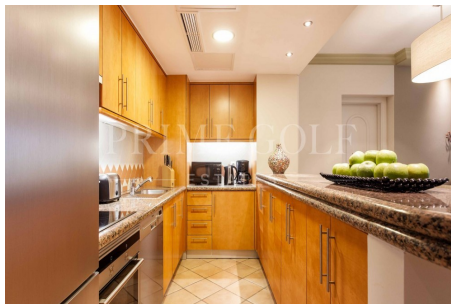
**€1.000.000**

**Ref: PG-1938**

Pine Cliffs Suites tend to be Golfers preferred accommodation option due to its size and location. It comprises 2- and 3-bedroom luxurious freehold apartments, located near the Golf Course and Clubhouse outlet (serves light meals and drinks complimented by the very best views of the course). This is the 2 bedroom apartment: Closed construction area: 73m<sup>2</sup> Terraces Area: 20,68m<sup>2</sup> - 24,32m<sup>2</sup> Total construction area: 93,68m<sup>2</sup> - 97,32m<sup>2</sup> Minimum Return on investment guaranteed with 183 Days of property usage. Totally Golden Visa compatible properties. Also for Real Estate buyers, besides being able to enjoy all of the resort's facilities, owners benefit from a guaranteed annual rental return of at least 5% during the first five years.



# Gallery



# Property Description

**Location:** Portugal, Albufeira

Pine Cliffs Suites tend to be Golfers preferred accommodation option due to its size and location. It comprises 2- and 3-bedroom luxurious freehold apartments, located near the Golf Course and Clubhouse outlet (serves light meals and drinks complimented by the very best views of the course).

This is the 2 bedroom apartment:

**Closed construction area: 73m2**

**Terraces Area: 20,68m2 - 24,32m2**

**Total construction area: 93,68m2 - 97,32m2**

Minimum Return on investment guaranteed with 183 Days of property usage. Totally Golden Visa compatible properties. Also for Real Estate buyers, besides being able to enjoy all of the resort's facilities, owners benefit from a guaranteed annual rental return of at least 5% during the first five years.

## Additional Info

For Sale	Beds: 2	Baths: 2
Type: Apartment	Living Area: 73m2	Plot Size: 93m2

## Features

Gated complex	Walking distance to the beach	Walking distance to amenities
Swimming pool		