

4 bed Apartment

€1.040.000

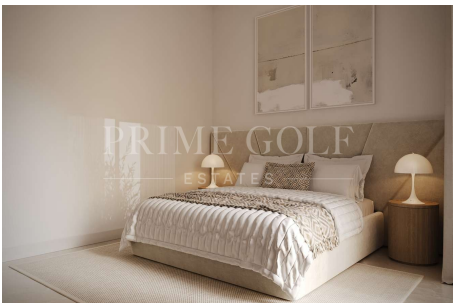
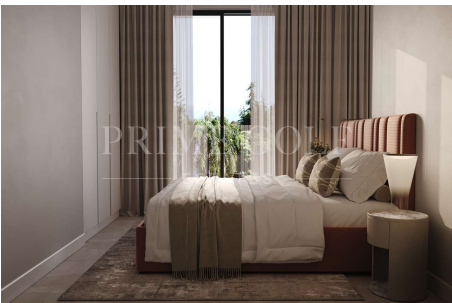
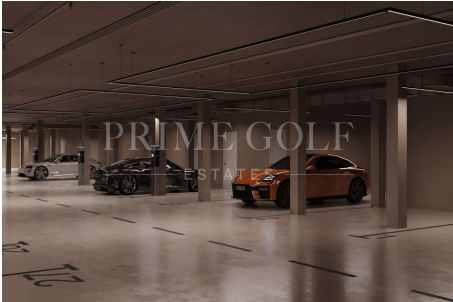
Ref: Royal--Park

Located on the prestigious New Golden Mile between Marbella and Estepona, this exclusive new residential development presents a refined collection of apartments and penthouses designed to offer spacious interiors, natural light, and a high level of comfort in one of the most desirable coastal areas of the Costa del Sol. The development consists of 57 residences available in 2, 3, and 4-bedroom layouts, with bright living and dining areas connected to open-plan kitchens. Large floor-to-ceiling windows extend the interior spaces toward generous terraces or private gardens, creating a seamless connection with the outdoors and maximizing natural light throughout the day. Each residence includes two private parking spaces and a storage room, adding practicality and convenience to everyday liv...

Telephone: + 34 6 29 89 28 94
Email: edmond@primegolfestates.com

PRIME GOLF
ESTATES

Gallery



Property Description

Location:

Located on the prestigious New Golden Mile between Marbella and Estepona, this exclusive new residential development presents a refined collection of apartments and penthouses designed to offer spacious interiors, natural light, and a high level of comfort in one of the most desirable coastal areas of the Costa del Sol.

The development consists of 57 residences available in 2, 3, and 4-bedroom layouts, with bright living and dining areas connected to open-plan kitchens. Large floor-to-ceiling windows extend the interior spaces toward generous terraces or private gardens, creating a seamless connection with the outdoors and maximizing natural light throughout the day.

Each residence includes two private parking spaces and a storage room, adding practicality and convenience to everyday living. Interior finishes have been selected to reflect quality and contemporary elegance, featuring porcelain flooring, modern kitchens, and bathrooms equipped with underfloor heating.

From the terraces, residents can enjoy open views and the atmosphere of the surrounding landscape, while the communal areas include two large swimming pools designed for relaxation and outdoor enjoyment.

The location benefits from immediate proximity to the coast, where kilometres of golden beaches meet the waters of the Mediterranean Sea, allowing year-round enjoyment of beachside living, whether for relaxation, swimming, or water sports.

Nearby beaches such as Playa del Padrón and Playa de Guadalmanza are easily accessible, while the surrounding area offers shops, restaurants, golf courses, paddle and tennis clubs, medical services, schools, entertainment venues, and shopping centres.

Additional Info

For Sale	Beds: 4	Baths: 2
Type: Apartment	Living Area: 201sq m	Plot Size: 201sq m
Ensuite Bathrooms: 2	Pool: Communal	Garden: Communal

Features

Front line golf	Front line beach	Amenities near
Transport near	Air conditioning	Central heating
Fully furnished	Fully fitted kitchen	Fireplace
Marble floors	Jacuzzi	Sauna
Basement	Guest room	Storage room
Gym	Alarm	Security entrance
Double glazing	Brand new	Dining room
Barbecue	Security service 24h	Telephone
Guest toilet	Private terrace	Kitchen equipped
Living room	Study room	Water tank
Separate apartment	Sea view	Country view
Mountain view	Golf view	Indoor pool
Heated pool	Smart home system	Laundry room
Internet - Wi-Fi	Covered terrace	24h Service
Electric blinds	Fitted wardrobes	Gated community
Garden view	Pool view	Panoramic view

Beach Side	Street view	Steam Room
Close to children playground	Close to sea / beach	Close to golf
Uncovered terrace	Glass Doors	Separate dining room
Open plan kitchen	Balcony	SPA
Turkish bath	Wheelchair-accessible	Excellent condition
Lake view	Ceiling cooling system	Ceiling heating system
Saltwater swimming pool	Close to shops	Close to town
Close to port	Close to schools	Surveillance cameras
Guest apartment	Marina view	Office room
Individual A/C units	Central heating by radiators	Electric radiators
Gas heating	Gres floors	Kitchenette
Ground floor patio	Partial sea views	Porcelain floors
Internet - Fibre optic	Walk-in closet	Gasoil heating
Septic Tank	Roof terrace	Mature gardens
Stone floors	Direct sea access	Mains water supply
Staff accommodation	EV charging station	Close to restaurants
City views	Co-Working area	Massage Room
Individual heating	Concierge Service	Parking included

Fan coil system

Fire pit

Motion detectors

Interior (facing inner courtyard)

Wheelchair-accessible home